

8

7

6

5

4

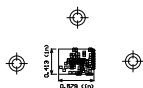
3

2

1

SYM REVISIONS
B EDCN SFH7050_AFE4403_MCU 11/25/13 MPK

VIEWED FROM TOP SIDE



TEXAS INSTRUMENTS INC.
© 2014
SFH7050_AFE4403_MCU
PDS REV B
PDS DRAWING
SHEET 1 OF 13
28-JAN-2014

Symbol	Qty	Count	Foot Size	Plated Hole Type
1	100	100	0.010 DIA	PTH
2	22	22	0.010 DIA	PTH
Total				122

Drill Table

GENERAL NOTES (UNLESS OTHERWISE SPECIFIED)

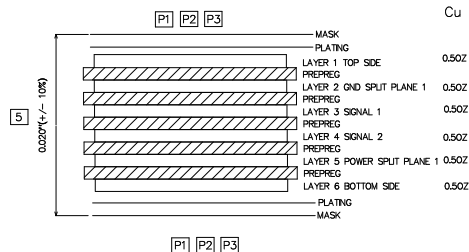
- FABRICATE PER 1 SPECIFICATION 601020-LATEST REVISION EXCEPT AS NOTED BELOW.
- LAMINATE MATERIAL FR-4.
- CORNER RADIUS 0.5 DE ON ALL LAYERS.
- MINIMUM ALLOWABLE LINE REDUCTION TO BE DONE ON 0.005" MINIMUM IS 0.005".
- MINIMUM BOARD THICKNESS: 0.005" +/- 0.001". SEE DETAIL A.
- HOLE POSITION ACCURACY: +/- 0.005".
- ALL PTH HOLES TO BE PLATED THROUGH 0.005" MIN. COPPER.
- BOARD HOLE AND PTH TO BE WITH 0.005" MIN. HOLE.
- MINIMUM ANNUAL RING OF PLATED-PTH HOLES TO BE 0.005".
- BOARD DIMENSION: 0.005" 0.13"
- ALL 0.005" VHS NEED TO BE FILLED WITH NON-CONDUCTIVE EPOXY-RESIN AND PLATED WITH COPPER.
- SURFACE MUST BE PLATED WITH TOLERANCE IS +/- 0.005" ON TOP SIDE ONLY AND +/- 0.005" ON BOTTOM SIDE.
- MINIMUM ANNUAL RING REQUIREMENT IS 0.005" FOR FILLED VHS.
- FOR 0.005" IN PTH TOLERANCE SHOULD BE +/- 0.005".
- MINIMUM VHS PTH TOLERANCE SHOULD BE +/- 0.005".
- ALL 0.005" VHS NEED TO BE PLATED ON BOARD EDGE AT 22 PLACES.
- ALL 0.005" VHS NEED TO BE TESTED IN THE BOTTOM.

PROCESS NOTES

- PLATING BOTH SIDES PER ANTIWASH GREEN UP
- SOLDERMASK CLEARANCE IS 0.005" AS SHOWN AS PAD SIZE FOR ALL: SMT
- COMPONENT VENDOR SHALL OVERSEE THE MASK CLEARANCE
- AS PER THEIR MANUFACTURING CAPABILITIES
- PLATING BOTH SIDES PER ANTIWASH COLOR-WHITE
- PLATING PLATE CIRCULARITY ON OUTER LAYERS TO 0-10 MICRO INCHES AU OVER MINIMUM OF 200 MICRO INCHES IN HOLE HARDNESS 130-200.

ALL UNITS ARE INCHES UNLESS OTHERWISE SPECIFIED.

DETAIL A
SCALE: NONE
LAYER STACKUP



THIS IS A NON IMPEDANCE BOARD.

MATERIAL	PROCESS	
SEE NOTES	SEE NOTES	
TOLERANCES UNLESS OTHERWISE SPECIFIED		SURFACE ROUGHNESS
LINEAR		MISCELLANEOUS
MILLIMETERS	INCHES	ANGLES +/- P
0.005 0.005	0.005 0.005	0.005 0.005
HOLES		ANGLES OF TAPPED HOLES 90° +/- P
MILLIMETERS	INCHES	REMOVE ALL BURRS & SHARP EDGES
0.005 0.005	0.005 0.005	
DRAFTSMAN: SHAWANAR	DATE: 11/25/13	CODE: 01295
DESIGNER: SHAWANAR	DATE: 11/25/13	TITLE: FABRICATION
CHECKER: QA TESSIE	DATE: 11/25/13	SFH7050_AFE4403_MCU
ENGINEER: PRAVEEN	DATE: 11/25/13	
APPROVED: PRAVEEN	DATE: 11/25/13	
RELEASED: MIC KAPLAN	DATE: 11/25/13	
SCALE: N	D	SEE
SFH7050_AFE4403_MCU		REV: 1

WO#305650-5778-D